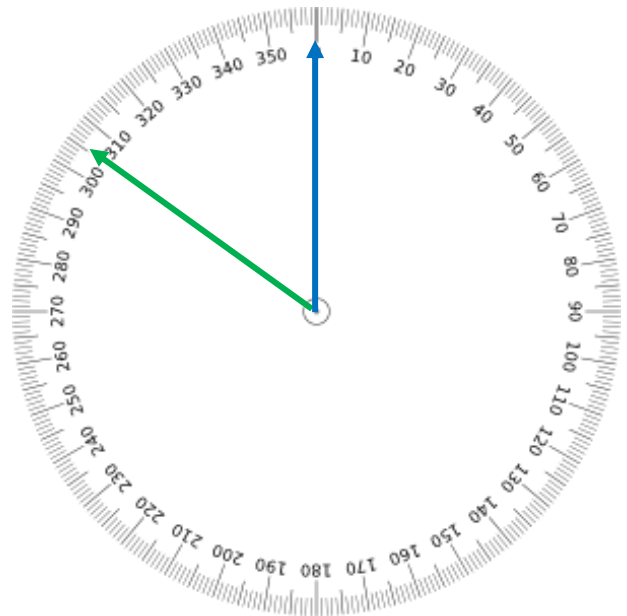


Part 2 Assignment

- 1) The red portion of a compass needle points toward magnetic north. (True or False) True
- 2) Magnetic north is located at the North Pole. (True or False) False
- 3) When located closer than 6", a _____ will adversely affect the accuracy of a compass. (Put an X next to all that make the statement true.)
- X cell phone X magnet X metal belt buckle ___ wet suit X knife X another compass
___ water bottle X camera X flashlight that's ON ___ salt water X hand held VHF radio
- 4) When the degree dial of a compass is rotated, the index line rotates with it. (True or False) False
- 5) A compass needle is magnetic. (True or False) true
- 6) Next to each of the 4 cardinal directions, write the corresponding heading in degrees, choose from the list below.
- | | | | | | | |
|----------------|----------------|------------------|-----------------|------|-------|----|
| <u>90</u> east | <u>0</u> north | <u>180</u> south | <u>270</u> west | | | |
| 90° | 270° | 45° | 180° | 100° | 27.5° | 0° |
- 7) A compass can be used as a 360° protractor. (True or False) True

- 8) To the right, if the blue line represents north and the green line is pointing to a lighthouse, what is the direction (bearing) in degrees to the lighthouse?

305



9) You are on your kayak in Casco Bay and you see a small island about a nautical mile from you. You use your compass to determine the bearing to the island. Your compass is to the right, what is the bearing to the island?

110

